



The view from HPC - July 2019

Hinkley Point C

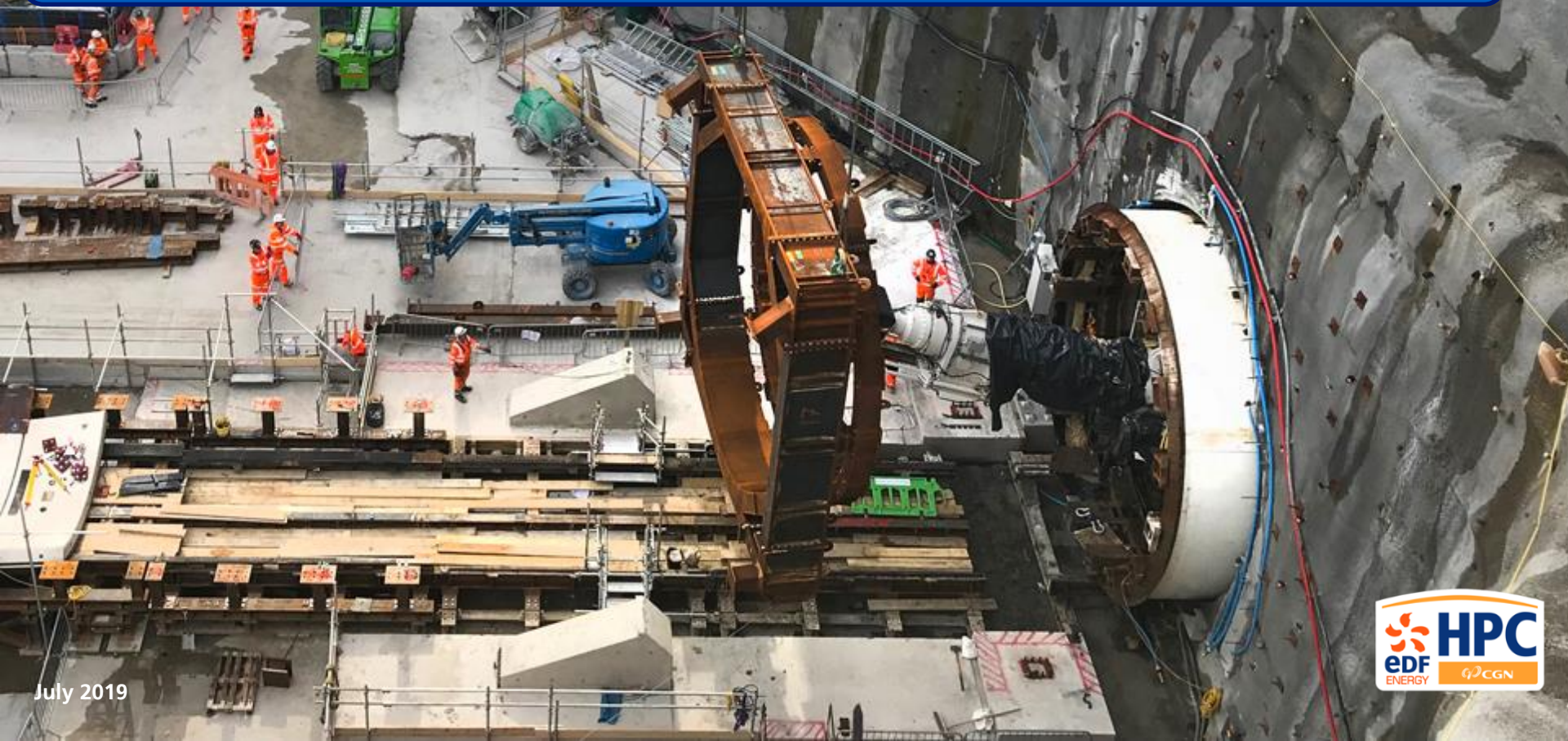


1. Tunnel Boring Machine, Mary, entering the launch adit in readiness to commence tunnelling the first of three cooling water tunnels at Hinkley Point C.



July 2019

2. The launch frame is shown here being placed around the screw conveyor before being attached to the launch adit. The first permanent ring will be installed before the Tunnel Boring Machine can commence the journey.



3. Installation of the sea water cooling pipes. This consists of over 1,400 metres of reinforced concrete pipes with an integral inner steel liner that will carry the cooling sea water.



July 2019

4. The World's largest land based crane the SGC-250, otherwise known as 'Big Carl' is being installed. The 250m tall crane will play a big role in building the two reactor buildings at HPC.



5. Unit 1 Nuclear Island where water and a thermal curing blanket are being used to slowly cure the concrete poured for the J0 milestone.



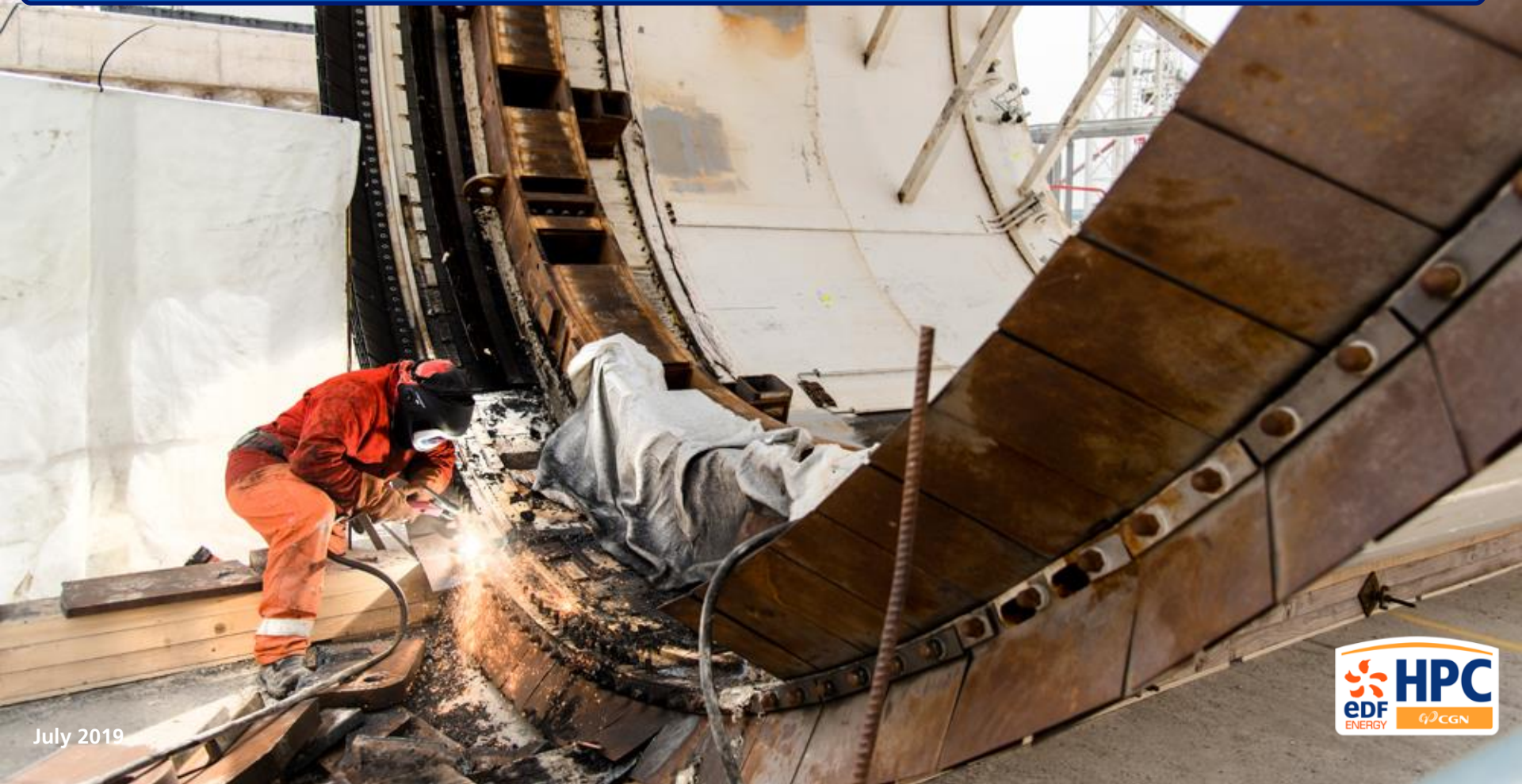
July 2019

6. Progress in Unit 2 Heat Sink area with the excavation of the liaison gallery.



July 2019

7. Final preparations taking place on the tail can before it was installed on the Tunnel Boring Machine.



July 2019

8. Once prepared the Tunnel Boring Machine tail was lifted by the Marr crane seen towering above it.



9. Surveying work at Unit 1 Nuclear Island.



July 2019

10. A carpenter working inside Bylor's innovative joinery workshop onsite.



July 2019

11. Using the plasma cutter on steel inside Bylor's steel workshop. Steel components to be used in the construction of Hinkley Point C are produced in the steel workshop and transported to where they will be used on site.



12. Front of the Sea Wall with wave return units fitted. Rock armour has been moved into its permanent position against the bottom of the wall.



July 2019

13. North Plaza drainage kerb installation in preparation for stoning up and surfacing works.



July 2019

14. Best Platform winners – Kier BAM Joint Venture reinforced earth wall team. The team scored high in each of the five categories that Pride of Platforms assess against.



July 2019

15. All six head structures are now under construction in Avonmouth for the sea water cooling tunnels. Over 1000 tonnes of rebar have been installed to date across the structures. The two square structures in the foreground are the outfall heads and the further four larger structures, intake heads.



July 2019

16. HPC and Bridgwater Town FC hosted Man Utd Legends for a charity football match watched by almost 1,000 spectators. This event raised over £10,000 for local Mental Health charity MIND Somerset.



2019





Map locations

1. Tunnel Boring Machine launch adit.
2. Launch frame for Tunnel Boring Machine.
3. Unit 1 sea water cooling pipes.
4. The World's largest land-based crane the SGC-250.
5. Unit 1 Nuclear Island.
6. Unit 2 liaison gallery.
7. Work on the tail of the Tunnel Boring Machine.
8. MARR Crane and tail section of Tunnel Boring Machine.
9. Surveying at Unit 1 Nuclear Island.
10. Bylor joinery workshop.
11. Bylor's steel workshop.
12. Sea Wall.
13. North Plaza preparation works.
14. 'Best Platform' winners.
15. Avonmouth work the heads for the sea water cooling pipe tunnels. (Not on map).
16. HPC and Bridgwater Town FC hosted Man Utd Legends for a charity football match. (Not on map)